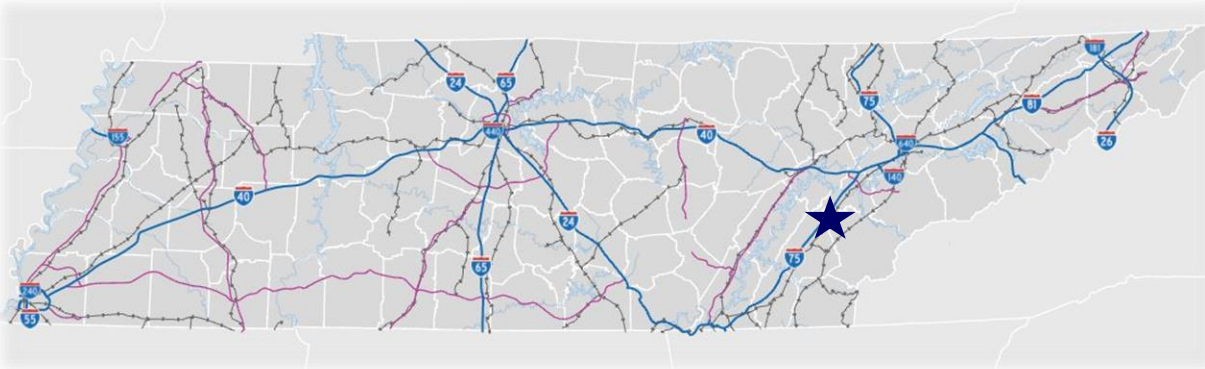
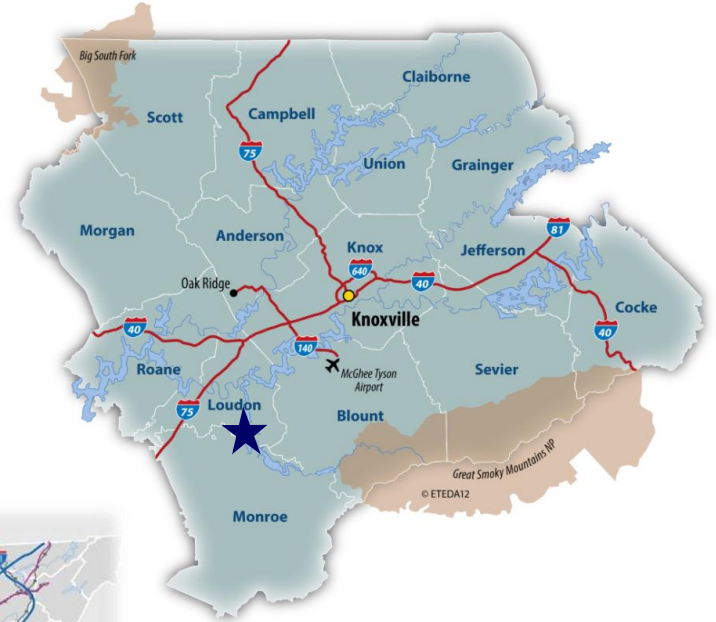
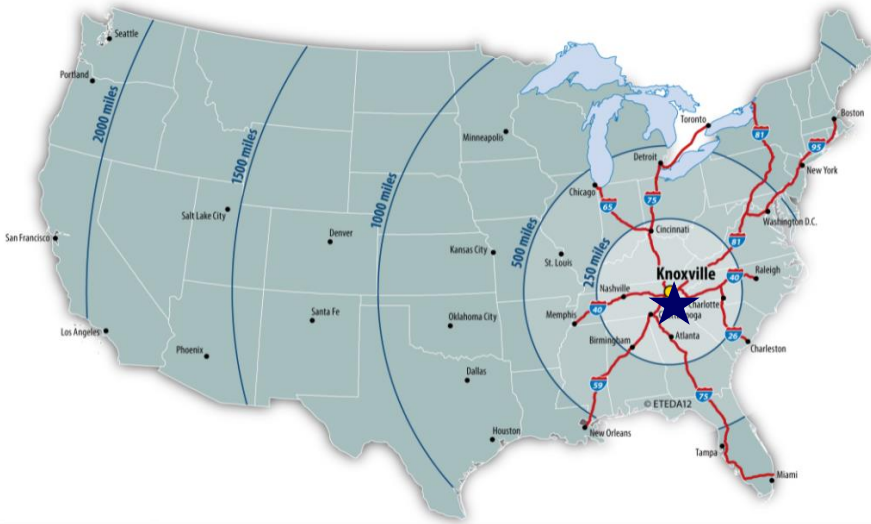


Tellico Regional Supplier Park



**Tellico Reservoir Development Agency
Loudon County, TN**



Tellico Regional Supplier Park is located in East Tennessee.

A short 30 Minute Drive or less to:

- Downtown Knoxville
- Oak Ridge National Laboratory
- University of Tennessee
- Great Smoky Mountains
- Cherokee National Forest
- Public/Private Schools
- Technical Schools



Tellico Regional Supplier Park

Approx. 150-acres



Loudon County
Economic Development Agency

Tellico Regional Supplier Park



Surrounding Land Uses

Rarity Bay Golf/Waterfront
Community Residential

Foothills Point
Residential

Tellico West
Industrial Properties

Tellico Regional
Supplier Park
Approx. 150-acres

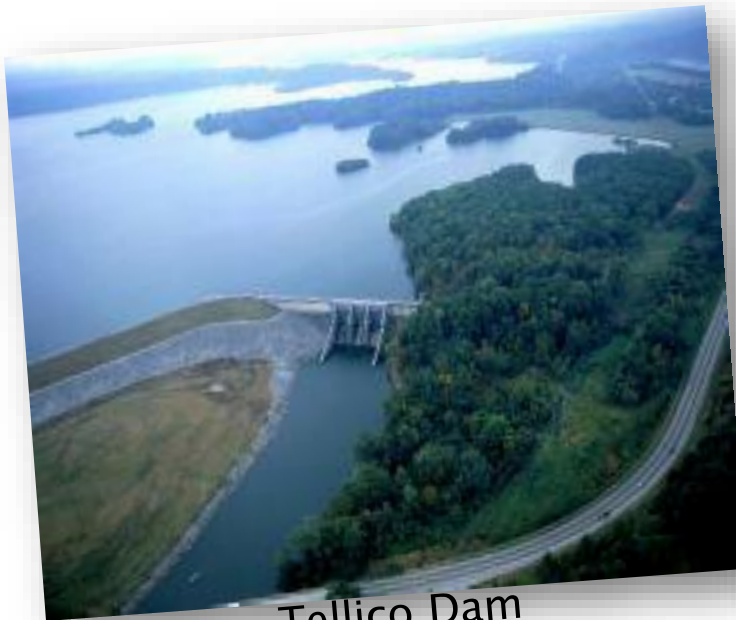
Niles Ferry
Industrial Park

Port of Tellico

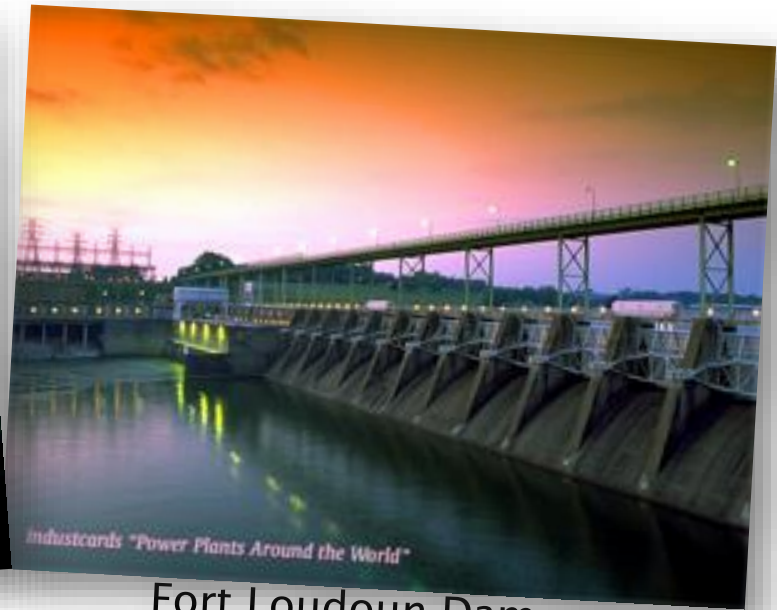
US 411
Commercial/
Residential



THE UTILITIES...



Tellico Dam



Fort Loudoun Dam



Tellico Regional Supplier Park Infrastructure and Utilities

▶ Utilities:

- Electric: 13kV Phase / 12MW
- Gas: 12" Main Line 6" line serving site
- Water: 12" Line serving site
- Sewer: 8" Line serving site





**Fort Loudoun
Electric Cooperative**

Distributor of Electricity to the Site



Supplier of Electricity to the Site

99.999% Reliability



Fort Loudoun Electric Cooperative Contacts:

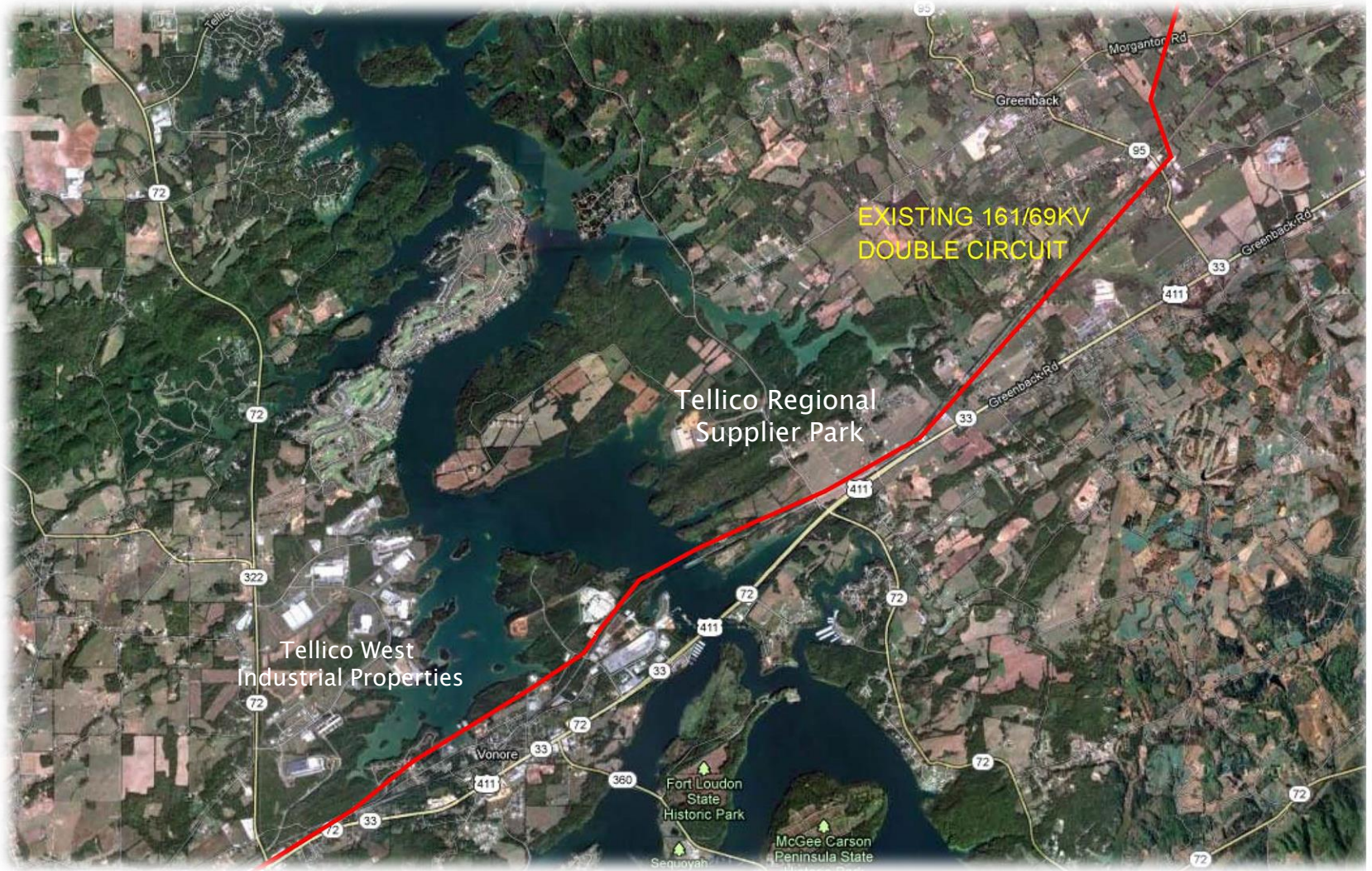
Jarrold Brackett, General Manager / CEO

1-877-353-2674 x. 123

jarrod.brackett@flec.org



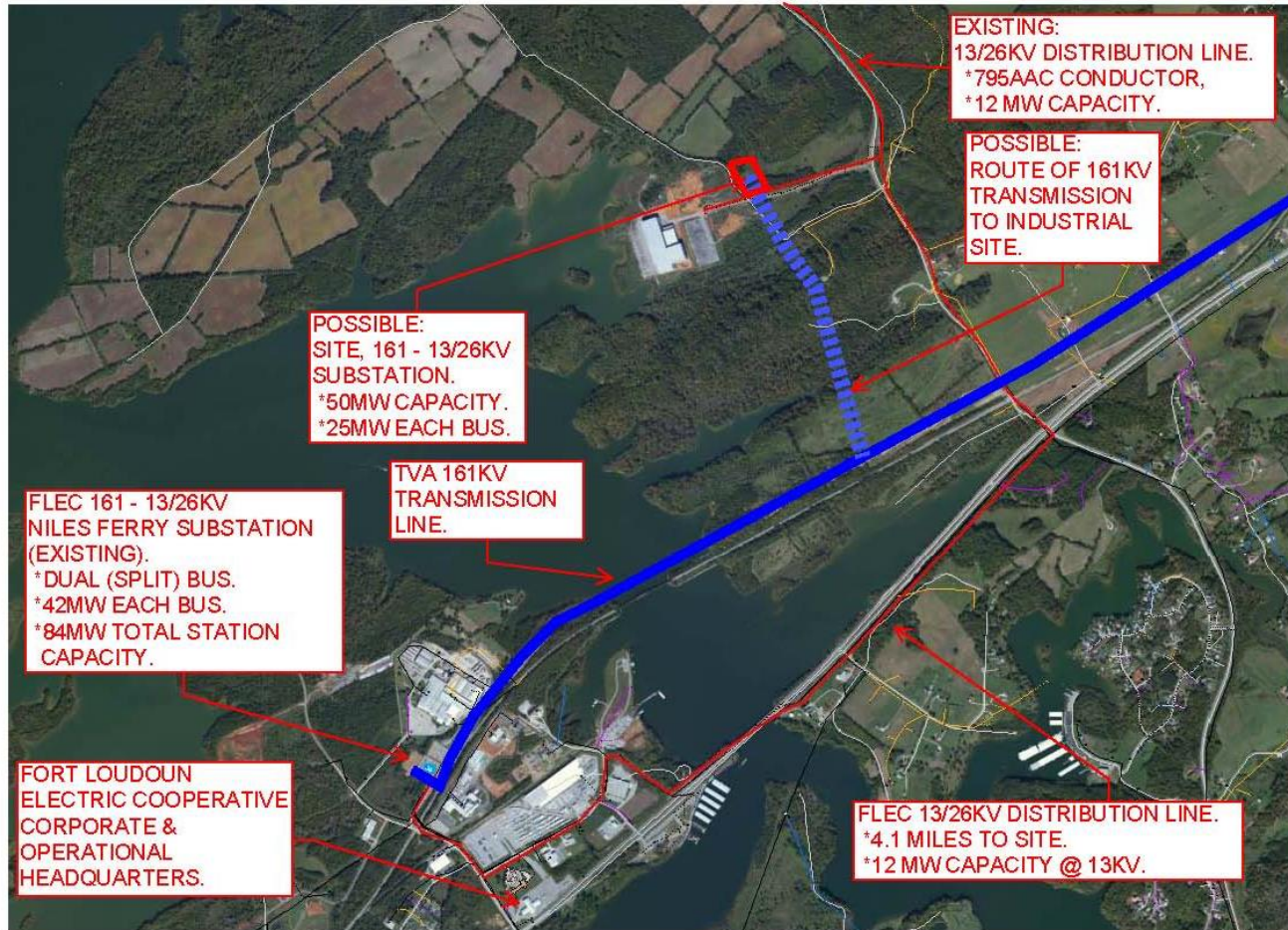
Loudon County
Economic Development Agency



ELECTRICITY



2014-11-20, Fort Loudoun Electric Cooperative



Prepared by: Chad Kirkpatrick, P.E. Vice President, Operations & Engineering. Chad.Kirkpatrick@flec.org. 865-255-2463 (mobile). 865-856-4722 (office).





Loudon Utilities Board
Distributor of Natural Gas to Site
6-inch Line Serving Site

12-inch Line Distribution Line North Side of Site



Loudon Utilities Board Contacts:

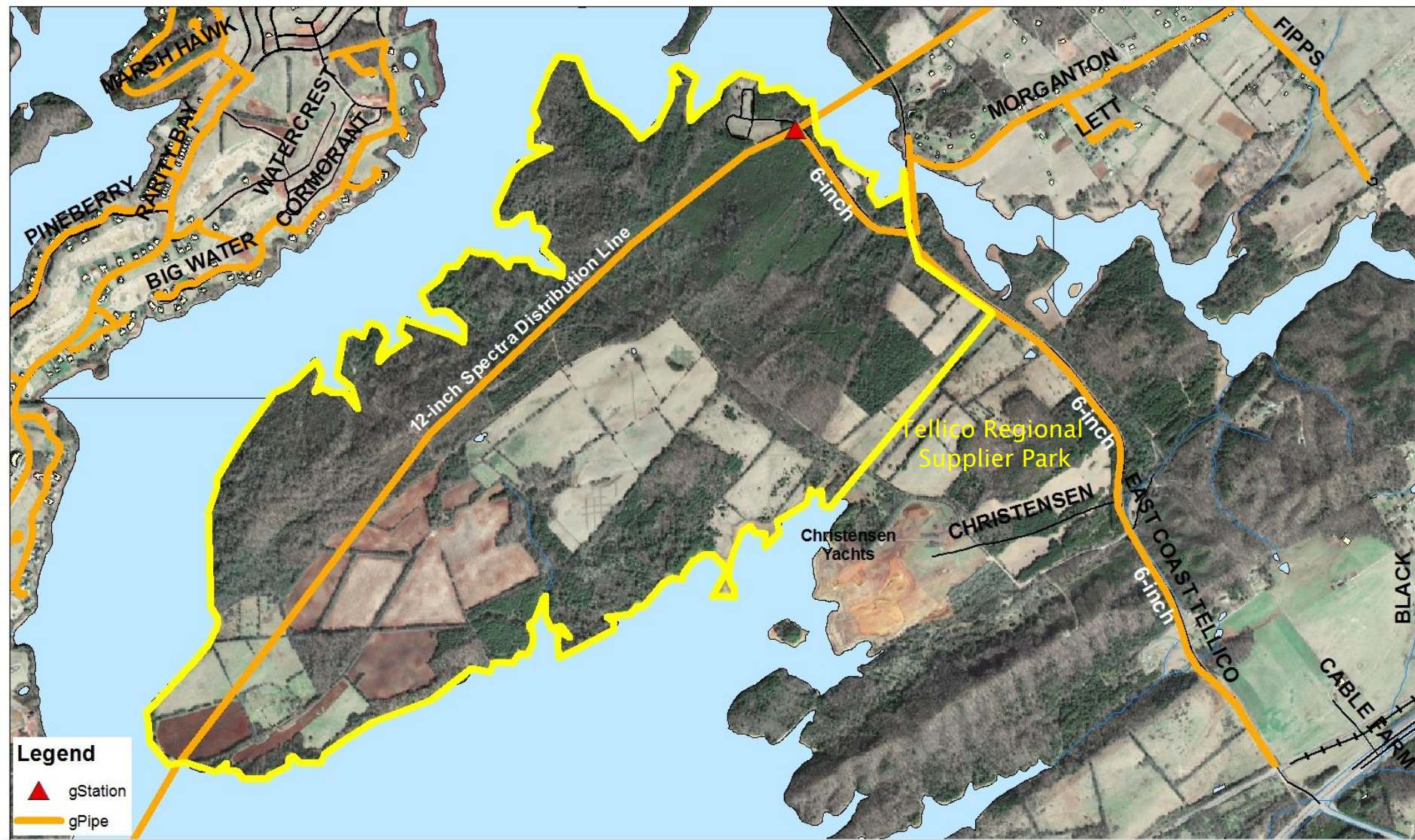
Ty Ross, General Manager
(865)936-7059

ty.ross@cityofloudontn.org



John Davis, Chief Engineer
(865) 458-2033

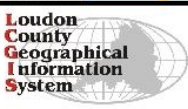
John.davis@loudonutilities.org





Legend

-  gStation
-  gPipe



For Illustration Purposes

Tellico Regional Business Park
 Natural Gas Line Location Map
 Greenback, Loudon County, Tennessee



Tellico Area Services System Provides Water to Site



12-inch Line Serving Site

Treatment Plant Capacity = 7 MGD
Available Capacity = 3.5 MGD



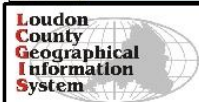
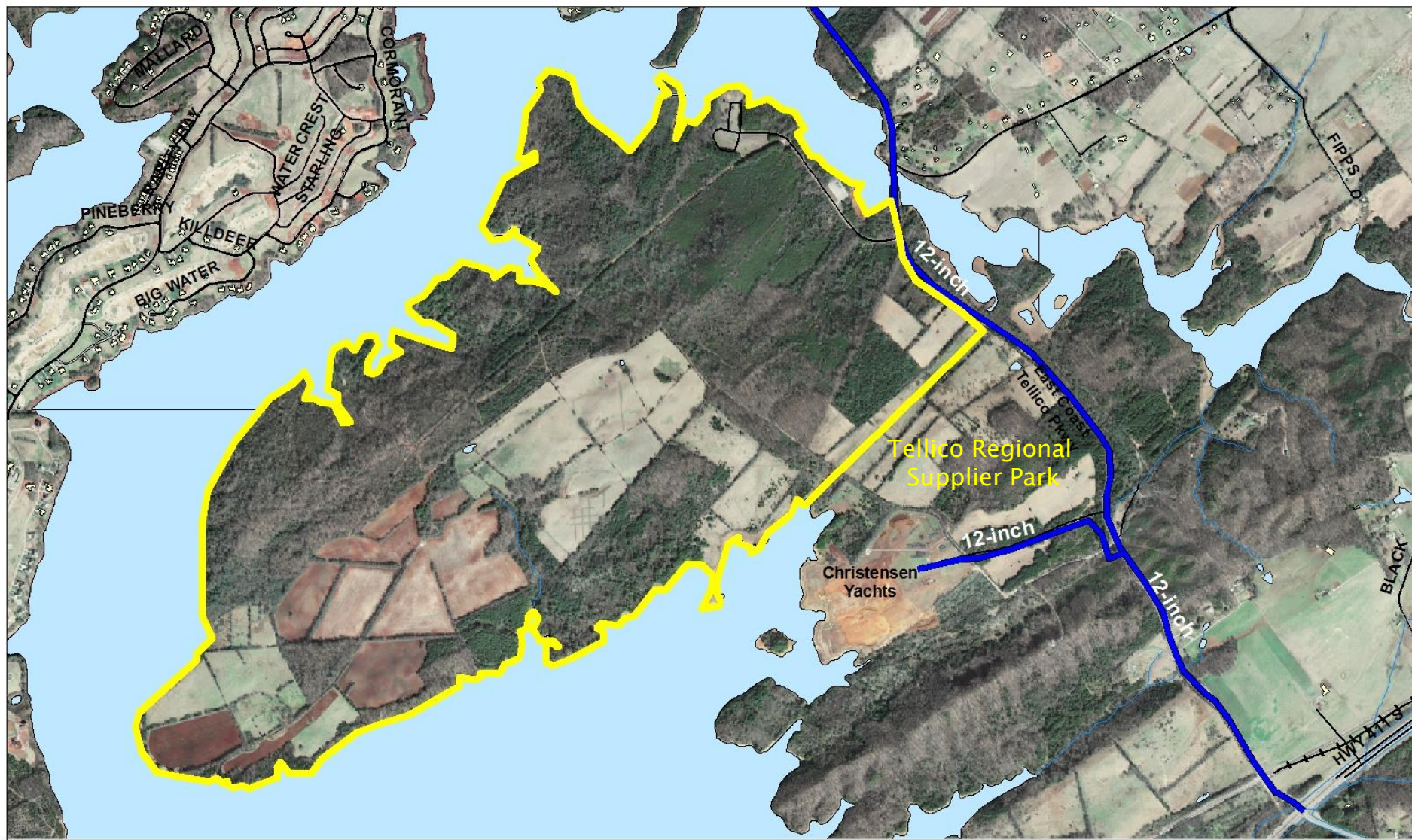
Tellico Area Services System Contact:

Mark Clinton, General Manager

(423) 884-6400

clinton@tassonline.org





For Illustration Purposes

Tellico Regional Business Park
Water Line Location Map
Greenback, Loudon County, Tennessee



Tellico Area Services System Provides Wastewater to Site

8-inch Line Serving Site

Treatment Plant Capacity = 1.5 MGD
Available Capacity = 1.1 MGD

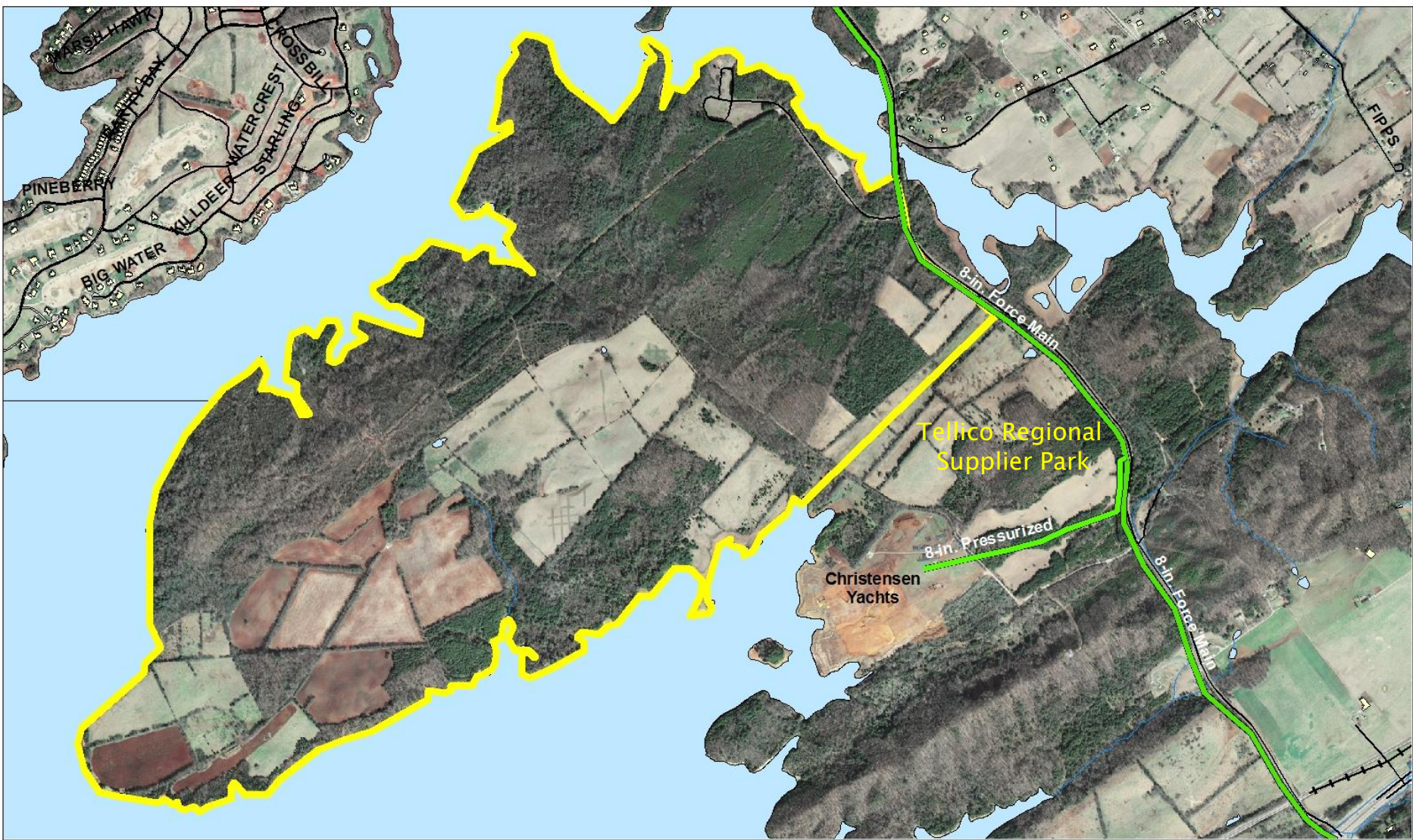


Tellico Area Services System Contact:

Mark Clinton, General Manager
(423) 884-6400

clinton@tassonline.org



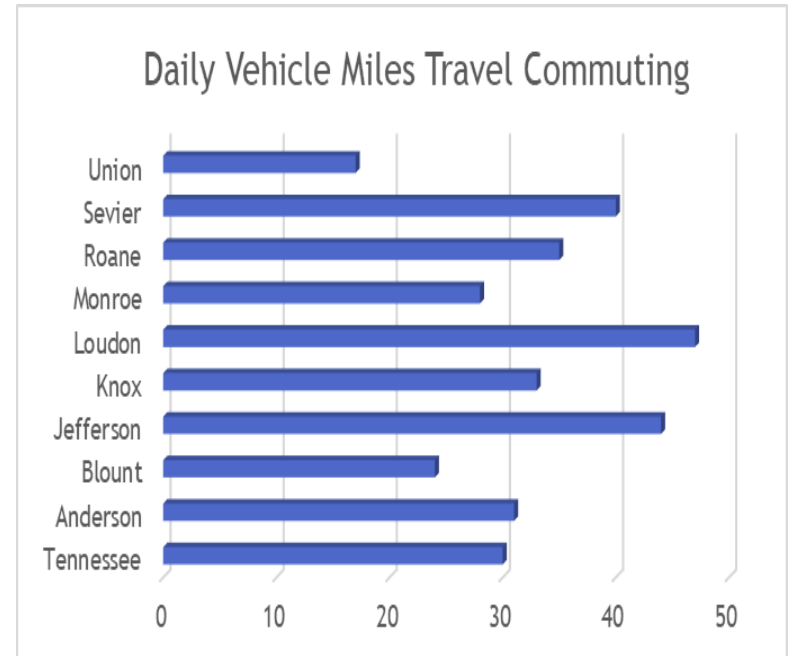
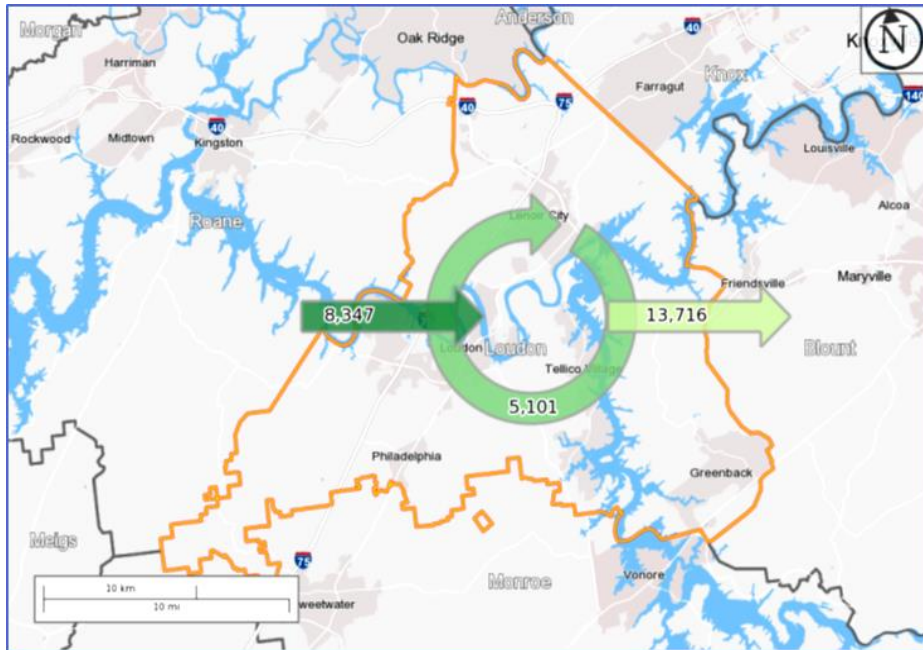


For Illustration Purposes

Tellico Regional Business Park
 Waste Water Line Location Map
 Greenback, Loudon County, Tennessee



Workforce Commuting Patterns



Education

Regional Public Schools

Loudon County Schools
Lenoir City Schools
Monroe County Schools
Sweetwater City Schools
Blount County Schools
Maryville City Schools
Knox County Schools

Workforce Preparedness

Automotive
Business
Information Technology
Manufacturing/Machining
Pre-Engineering
Etc.

Other Regional Assets

Multiple Private Schools
Dual Credit Classes

2020 – 2025 Tennessee STEM School Designation

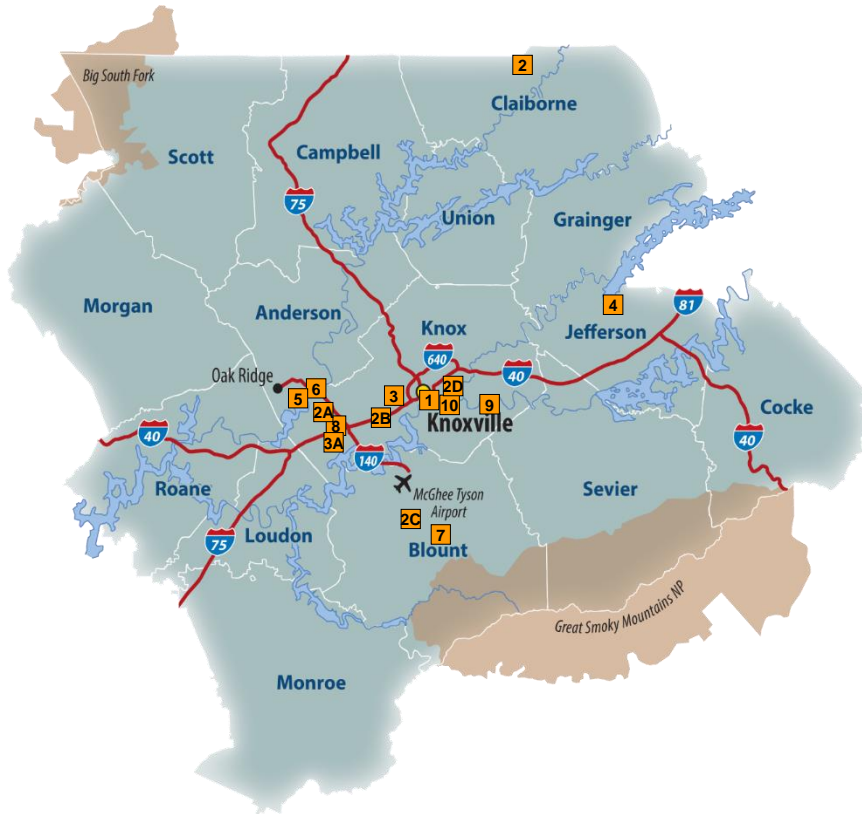


K-12
Excellence in Education



Loudon County
Economic Development Agency

4 Year Colleges and Universities



4 Year Colleges and Universities

Name	2020 Enrollment	2020 Graduates
1. University of Tennessee Knoxville	29,460	7,467
2. Lincoln Memorial University-Main	4,867 (s)	1,642
A. Lincoln Memorial University - Medical		
B. Lincoln Memorial University – Cedar Bluff		
C. Lincoln Memorial University - Alcoa		
D. Lincoln Memorial University- Law		
3. South College - Lonas	2,843 (s)	1,268
A. South College – Goody’s Lane		
4. Carson Newman University	2,725	806
5. King University	1,435 (s)	780
6. Tusculum College Knoxville Campus	1,353 (s)	472
7. Maryville College	1,143	234
8. Tennessee Wesleyan University	1,116 (s)	304
9. Johnson University	1,037	282
10. Strayer University	N/A	N/A
Total	45,979	13,255

(s) System wide enrollment numbers.
Source: JobsEq, websites



Community and Technical Colleges



Community and Technical Colleges

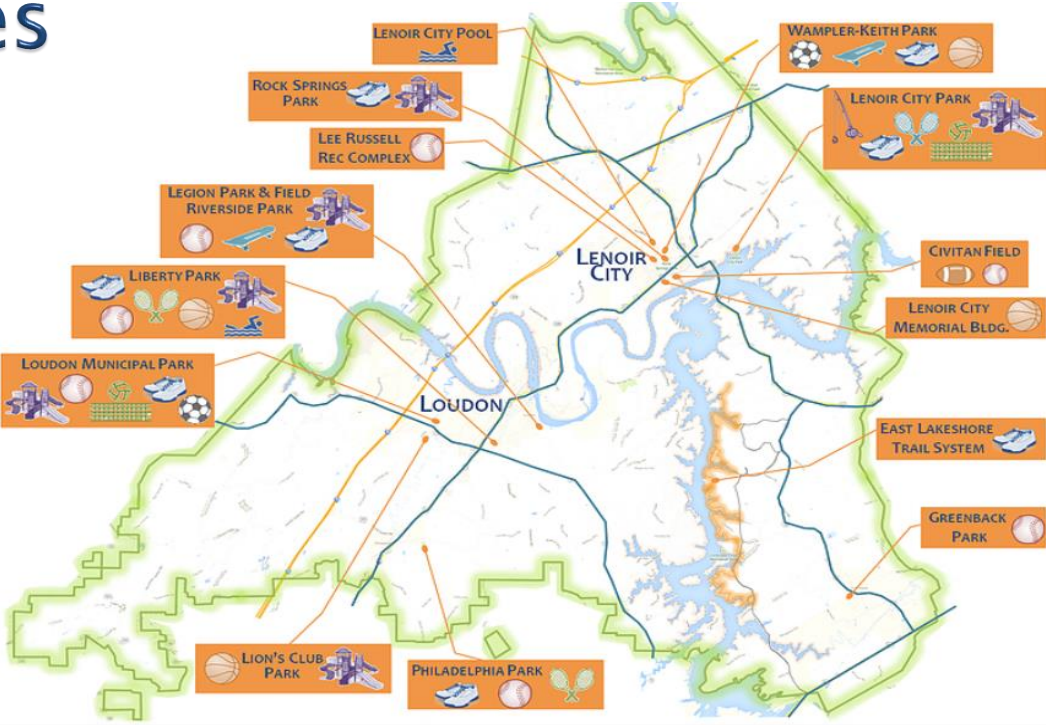
Name	2020 Enrollment	2020 Graduates
1. Mississippi State Community College – Main	10,694 (s)	2,201
A. Blount Campus		
B. Magnolia Ave.		
C. Division St.		
D. Strawberry Plains		
2. Walters State Community College – Main Hamblen	6,144 (s)	1,328
A. Walters State Community College - Sevier County		
B. Walters State Community College – Cocke County		
C. Walters State Community College – Claiborne County		
3. Roane State Community College- Main	5,861 (s)	1,136
A. Oak Ridge		
B. Campbell County		
C. Knox County		
D. Loudon County		
E. Morgan County		
F. Scott County		
G. Anderson County Higher Education Facility		
4. Cleveland State Community College – Vonore	3,264 (s)	1,147
5. Tennessee College of Applied Technology- Knoxville	909	405
6. Tennessee College of Applied Technology- Harriman	252	168
7. Tennessee College of Applied Technology- Jacksboro	265	91
8. Tennessee College of Applied Technology- Oneida	320	147
Total	27,709	6,623

(s) System wide enrollment numbers.

Source: JobsEq, websites



Lifestyle & Activities



Foothills of the **Great Smoky Mountains National Park**

Foothills of the **Cherokee National Forest**

Six Championship **Golf Courses**

Multiple **Parks** & Miles of **Trails**

Shores of **Tellico Lake**

Five **Navigable Bodies of Water**



QUALITY OF LIFE



Culture



- Zoo
- Ballet / Dance
- Concerts
- Symphony
- Museums
- Theatre / Opera
- Historic Places
- Cultural Festivals



Thank You For Your Time!

Bryan Hall, Executive Director
Tellico Reservoir Development Agency
(423) 337-1027
b.hall@trda.us

Jack Qualls, Director
Loudon County Economic Development Agency
(865) 963-5729
qualls@loudoncountyeda.org

